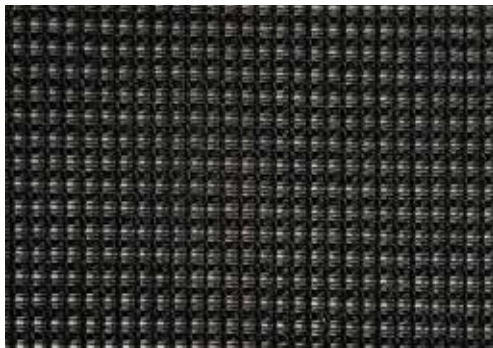


M2 Mesh



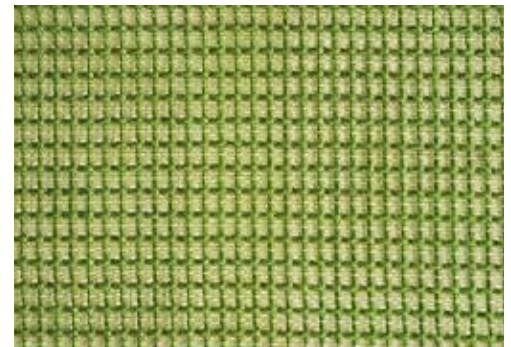
Black M21



Gray M22



White M23



Green M24

Pattern: M2 Mesh

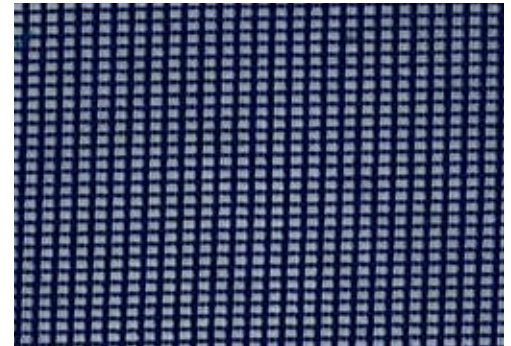
99% Polyester,
1% Elasthan

Abrasion: 4-5 Wet and
Dry

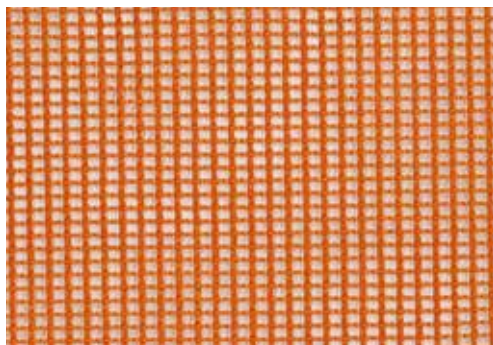
Soil and Stain Resistant



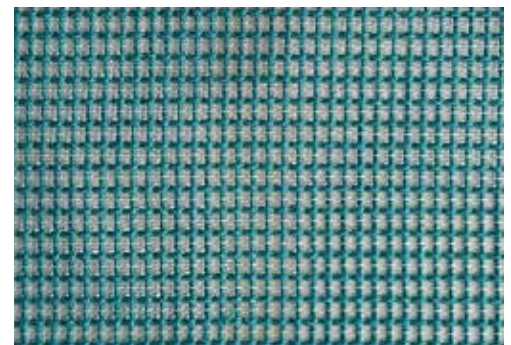
Red M25



Blue M26



Orange M27



Aqua M28



**EXPRESSSHIP
FABRICS**

9to5 Seating's ExpressShip Mesh Program

Need it fast? We have you covered with a wide variety of mesh options in 5 days! ExpressShip Program offers expedited delivery on our seating products, now with many mesh options shown here. Product will be completed and ready to ship within 5 business days.

ExpressShip Purchase Orders placed separately ship in 5 business days. If combined with other fabrics, the lead time of the fabric with the longest lead time will be used.

info

Pattern	M2 Mesh
Fiber Content	99% Polyester, 1% Elasthan
Abrasion	4-5 Wet and Dry
Applicable ACT®	    
Light-fastness	5-7
Cleaning Code	W

Icon Upholstery Definitons



Fire Retardancy

Flammable testing determined as fabric's resistance to burning.
PASSES - California 117



Colorfastness To Wet & Dry Crocking

Colorfastness to wet & dry crocking refers to the rubbing off of color from the fabric unto clothing, hands or other materials and can occur under wet or dry conditions.
PASSES - AATCC 8-1974 Dry Crocking, Class 4 minimum; Wet Crocking, Class 3 minimum.

Abrasion

Abrasion is the ability of fabric to withstand damage from wear and rub. This is a general contract specification as well as a heavy duty specification.
PASSES -



General Contact: ASTM 3579 modified (#10 cotton duck); 15,000 double rubs Wyzenbeek Method



Heavy Duty: ASTM 3579 modified (#10 cotton duck); 30,000 double rubs Wyzenbeek Method or ASTM D4966 (with 21oz. weight); 40,000 rubs Martindale Method



Colorfastness to Light

Colorfastness to light is the degree to which fabric will retain its color when exposed to light.
PASSES - AATCC 16A-1974 or AATC 16E-1976; Class 4 minimum at 40 Hours. NOTE: Class 4 minimum at 60 hours is recommended for direct sunlight exposure situations.



Physical Properties

3 Physical property tests include: brush pill test to determine a fabric's pilling. Breaking/tensile strength is the ability of a fabric to withstand tension without breaking or tearing. Seam slippage is the pulling apart of fabrics at the seam.
PASSES - Brush Pill ASTM D3511, 3-4 minimum. Breaking Strength ASTM D3597-D1682-64 (1975) 50lbs. minimum in warp & weft Seam Slippage ASTM D3597-D434-75 25lbs. minimum in warp & weft.

9to5[®]
seating

3211 Jack Northrop Ave.
Hawthorne, CA 90250

PHONE
888.925.SEAT

FAX
866.925.SEAT

EMAIL
sales@9to5seating.com

9to5seating.com
Follow us: @9to5seating

